

# PreMoBAF

## Data-driven methods for predicting and monitoring the behavior of Blast Furnace and Electric Arc Furnace



Matej Vukovic<sup>1</sup>, Belgin Mutlu<sup>1</sup>, Petra Krahwinkler<sup>2</sup>, Stefan Thalmann<sup>3</sup>

Pro2Future GmbH<sup>1</sup>, Primetals Technologies Austria<sup>3</sup>, KFU-BANDAS (Business Analytics and Data Science-Center)<sup>4</sup>

<sup>1</sup> Inffeldgasse 25F, 8010 Graz

<sup>2</sup> Turmstraße 44, 4031 Linz

<sup>3</sup> Universitätsstraße 15 Bauteil F/III, 8010 Graz



### MOTIVATION & GOALS

- **Blast furnace (BF) and electric arc furnace (EAF) are key processes** in the iron and steel production. **Stability** of these processes is **crucial** due to the complexity of processes that take place during the operation.
- **Overall dynamics** of these processes are **difficult to model** as the processes inside of the furnaces are **barely accessible for direct measurements**.
- **Data-driven approaches** such as Machine Learning (ML) and Deep Learning (DL) have been applied to model the complex behavior **with limited success**. Existing models could capture some of the process dynamics **but give no insight to the underlying mechanisms**.
- Goal of this research is to utilize **data-driven and explainable AI (xAI) methods to better understand the inner dynamics** of the blast furnace and electric arc furnace operation.

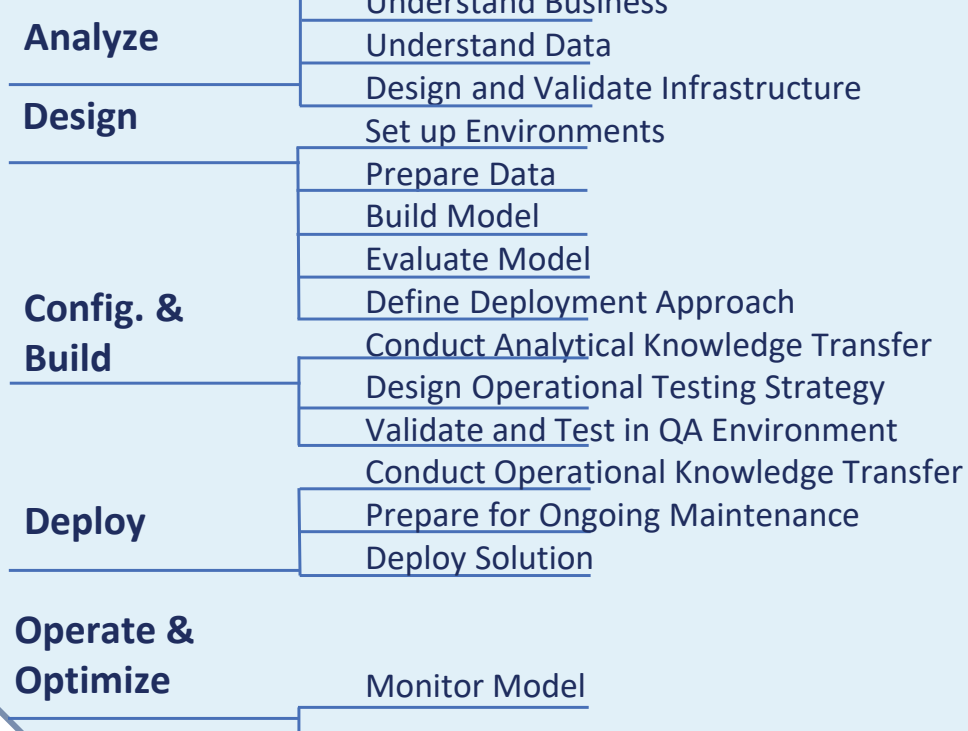
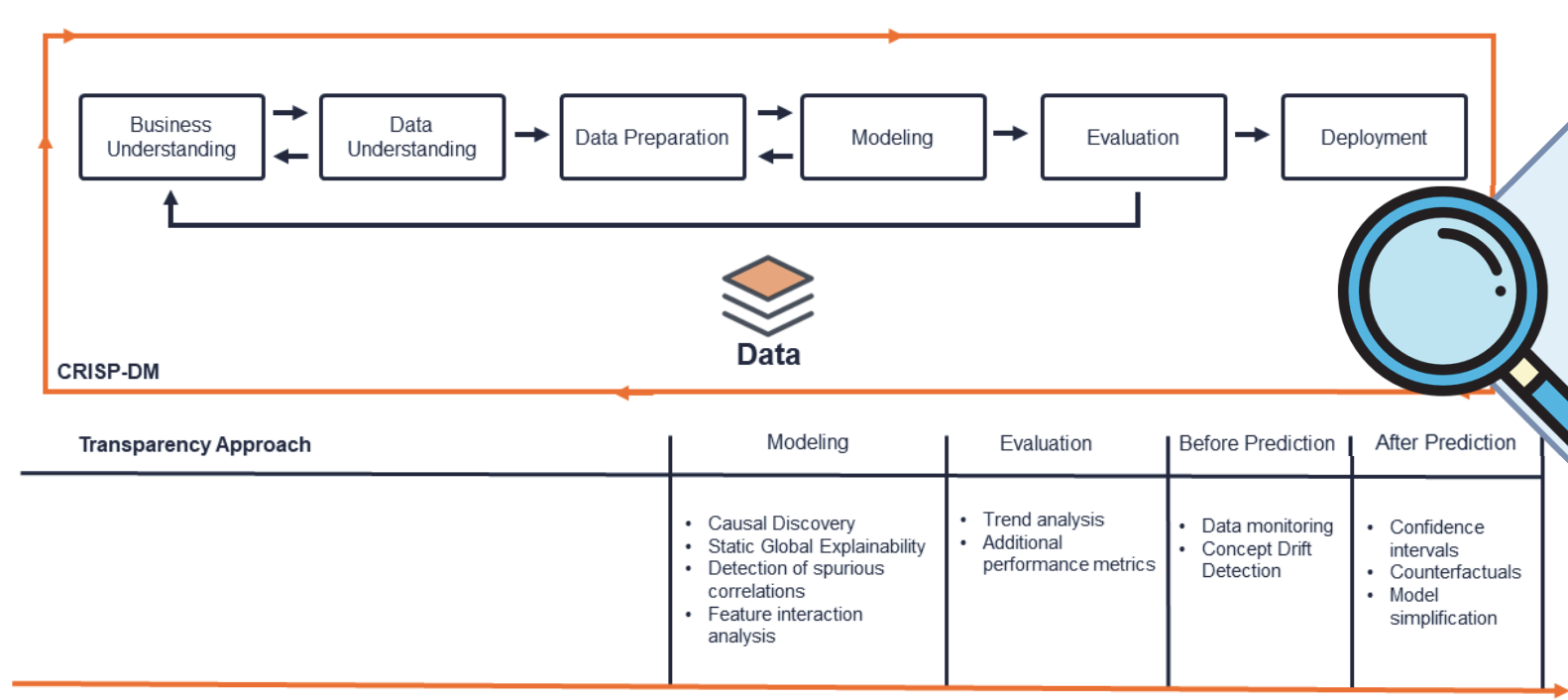
#### Project FactBox

Project Name PreMoBAF  
Project ID MFP II 3.1  
Duration 48 Months

Area 3  
Cognitive Decision Making

Project Lead  
DI Dr. Belgin Mutlu

### APPROACH



### CONTRIBUTION

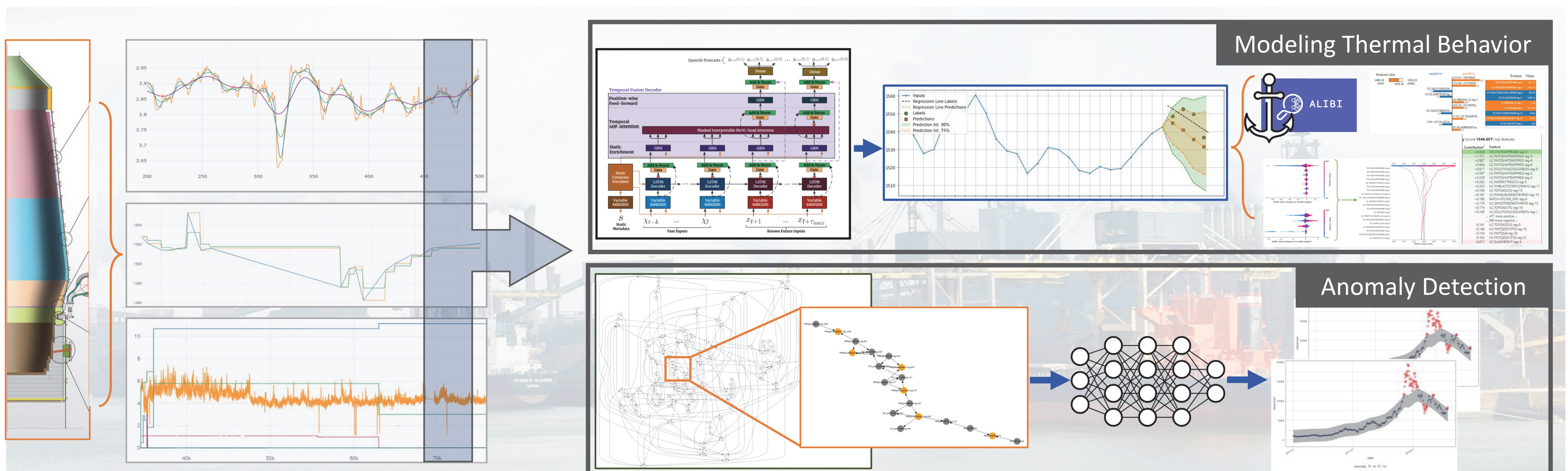
#### Scientific contribution

- Application of DL models in production scenarios
- Methods for knowledge discovery from ML/DL
- Factors crucial for acceptance of ML models in industry (xAI, causal AI, domain knowledge)
- Handling assumptions of causal discovery in complex industrial process

#### Economic contribution

- Modelling domain knowledge from data-driven methods in BF and EAF processes
- DL models in automated decision making
- Improvements in process control

### SYSTEM ARCHITECTURE



Contact: Matej Vukovic M.Inf., Pro2Future GmbH, matej.vukovic@pro2future.at, +43 316 873 - 9162

Acknowledgement: This work was supported by Pro2Future (FFG, 881844) and Primetals Technologies Austria GmbH.

